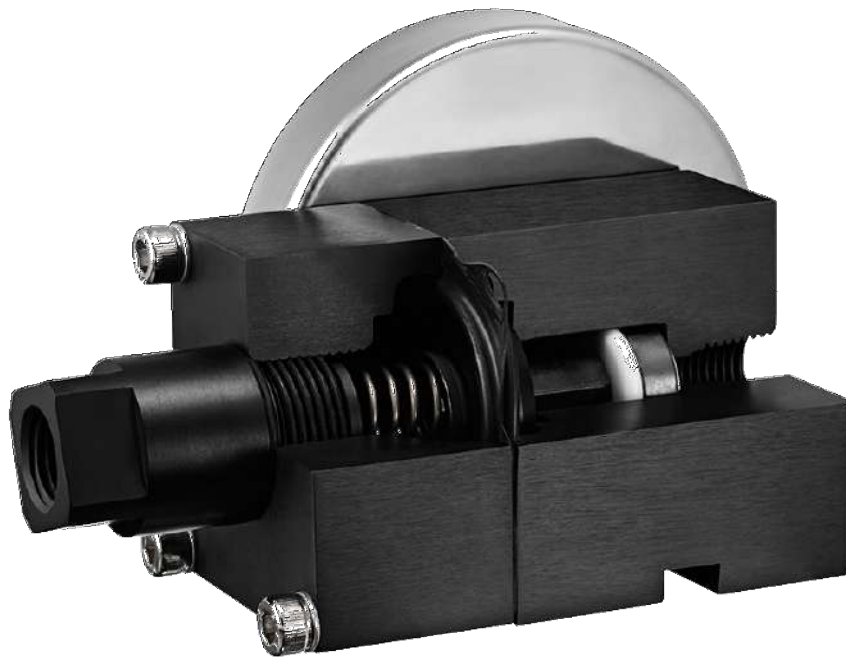




Differential Pressure  
Plus Inc.  
Branford, CT, U.S.A



DG

diaphragm style dp gauge

# DG Standard Gauge



*Great for measuring flow rates*



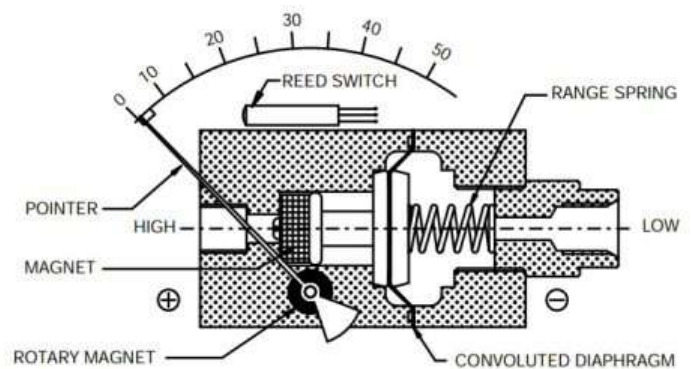
*Great Microbulk Cryogenic tanks*

## Available Pressure Ranges

- (1-50 PSID)

## Specs

- Viton Diaphragm
- Aluminum, Brass, or Stainless
- 1,500 PSI system pressure
- 175F Temperature Rating
- Electrical switches and many other optional accessories



# Model Number System

- Standard polymer dial cases come with panel mounting hardware
- Stainless Steel Dial Case option available in panel and non-panel mount
- Specialty pressure ranges available upon request
- Custom Logos are no extra cost



XX

-

XXXX

-

XX

-

XX

Gauge Model	Port Location	Body Material	Dial Face Size	Range	Options
PG: Piston Gauge DG: Diaphragm gauge RDG: Rolling Diaphragm Gauge LDG: Large Diaphragm Gauge	1: Inline 2: Rear 3: Bottom	A: Aluminum B: Brass S: Stainless	25: 2.5" 45: 4.5" 60: 6.0"	#P: PSID #B: Bar #KPA: kPA #IW: in. H2O #mW: mm H2O	CB: Color Band CL: Custom Logo CR: Calibration Report ES: EPDM Seals FP: Follower Pointer LF: Liquid Filling MB: Mounting Bracket OX: Oxygen Cleaning SS: Steel Dial Case SF: Steel Dial Case (Panel Mount)

## Examples

### Application 1

#### Design Requirements

- Piston Gauge
- Inline Connections
- Aluminum body with standard Buna seals
- 2.5" dial case
- 10 PSID range
- No Options

#### Model number

- **PG-1A25-10P**

### Application 2

#### Design Requirements

- Piston Gauge
- **Bottom** Connections
- Aluminum body with standard Buna seals
- 2.5" dial case
- **2 Bar** range
- **Liquid Fill**

#### Model number

- **PG-3A25-2B-LF**

### Application 3

#### Design Requirements

- Piston Gauge
- Inline Connections
- **Stainless body** with standard Buna seals
- 2.5" dial case
- 10 PSID
- **Color Band**
- **1 SPST switch with terminal strip**

#### Model number

- **PG-1S25-10P-CBS2**

#### Electrical Switches

- S1: 1 SPST w/DIN Plug
- S2: 1 SPST w/terminal strip
- S3: 2 SPST w/DIN Plug
- S4: 2 SPST w/terminal strip
- S5: 1 SPDT w/DIN Plug
- S6: 1 SPDT w/terminal strip
- S7: 2 SPDT w/DIN Plug
- S8: 2 SPDT w/terminal strip

Standard Ranges	(PSID)	1	5	10	15	20	30	50

Other Units	kPa	mBar	Bar	In H2O	mm H2O

# Accessories Overview



Follower Pointer: Shows Max Reading



Color Band: Customizable 3 Color Arc



Mounting Bracket: For Walls or 2" Pipe



Liquid Fill: For Vibration or High Humidity



Standard Polymer Dial Case  
(includes panel hardware)



Steel Dial Cases  
(Available in Standard or Panel Mount)

## SWITCH SETTING :

Please follow these instructions when your differential pressure instruments are supplied with switch. The switches are normally factory set to save time at customer's end. However they are field adjustable.

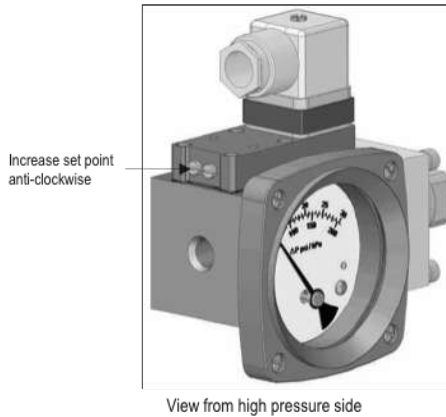
**CAUTION :** Supply should not exceed switch rating. For higher supply, use of relay circuit is recommended.

## SWITCH ADJUSTMENT

Switch adjustment screw is located on plastic cover.

Rotate the screw anti-clockwise to increase the set point and clockwise to decrease the set point. One or two trials may be necessary to attain the exact set point. Above procedure to be followed by putting the instrument on test bed or while in actual service.

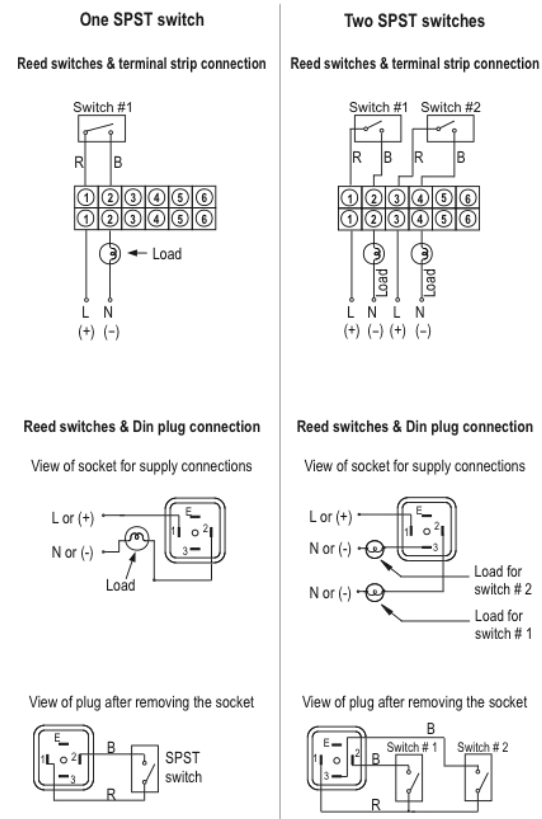
**NOTE :** Instrument and switch has IP65 protection. PG7 gland is provided for terminal strip option ( Use cable dia 3-6.5 mm ). PG9 gland is provided for cables for DIN plug option ( Use cable dia 4 - 8 mm ).



## SPST SWITCH

### Specifications

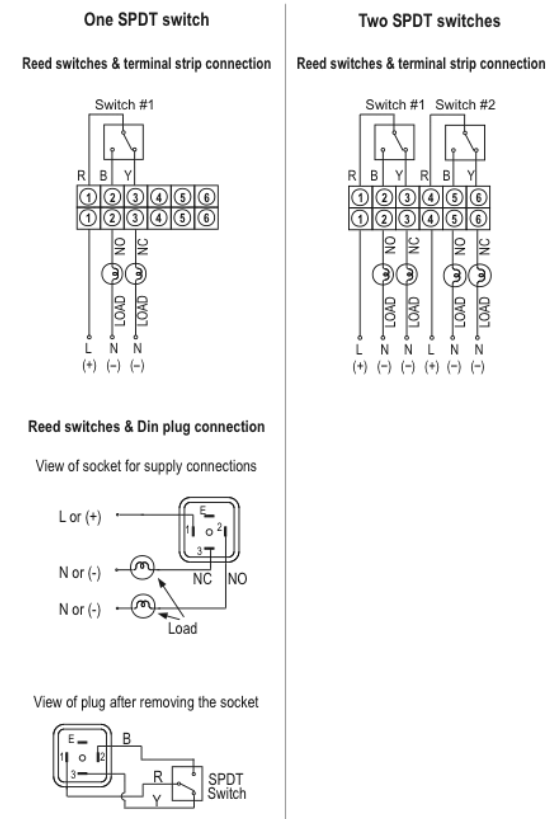
Switches are provided as per customer requirement. Please refer gauge label for switch specification.



## SPDT SWITCH

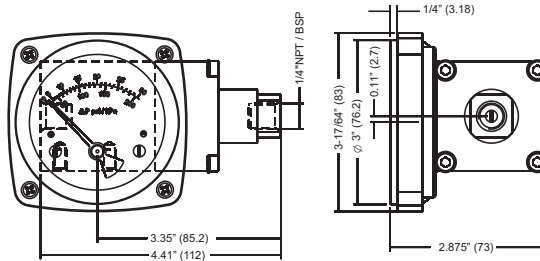
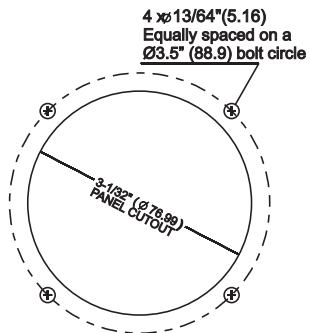
### Specifications

Switches are provided as per customer requirement. Please refer gauge label for switch specification.

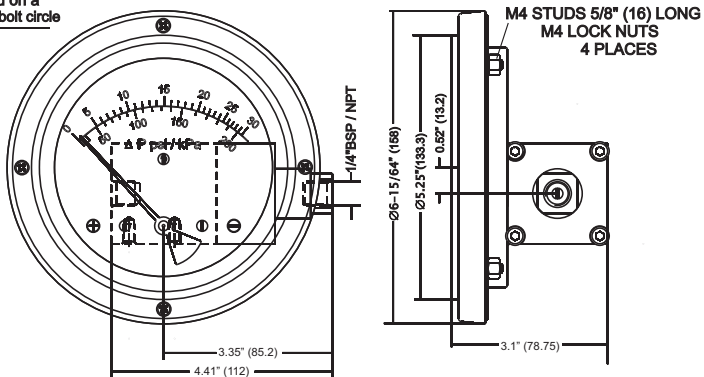
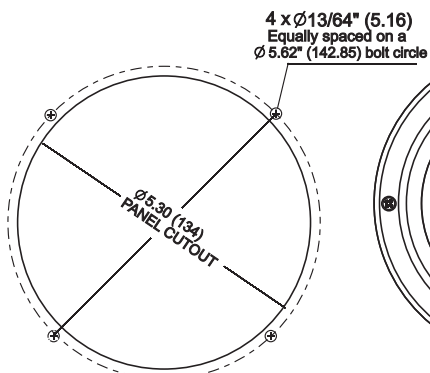


R=Red, B=Black, Y=Yellow, L=Live or +ve supply, N=Nutral or -ve supply

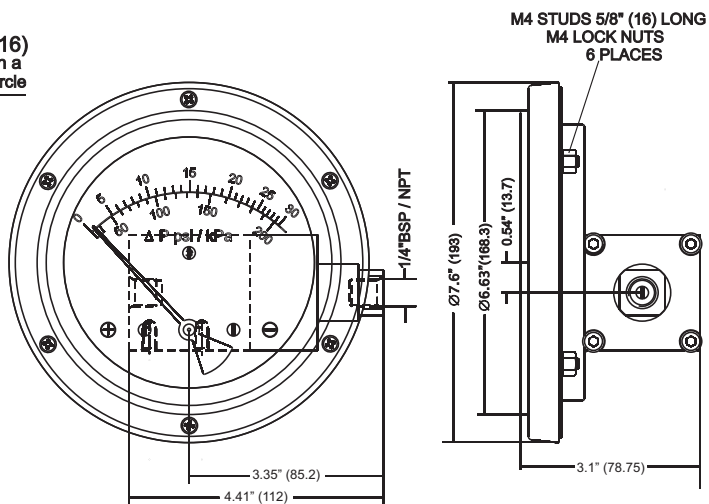
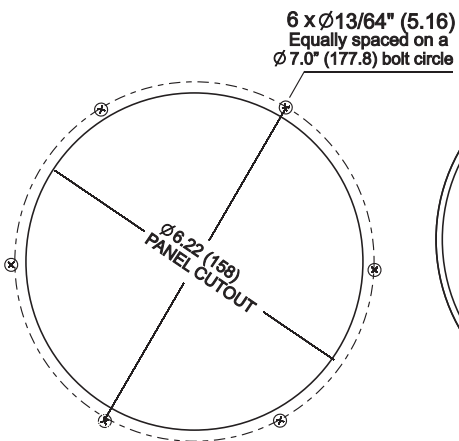
★ Body to be suitably earthed while using gauge + switch and only switch.



2-1/2" DIAL SIZE



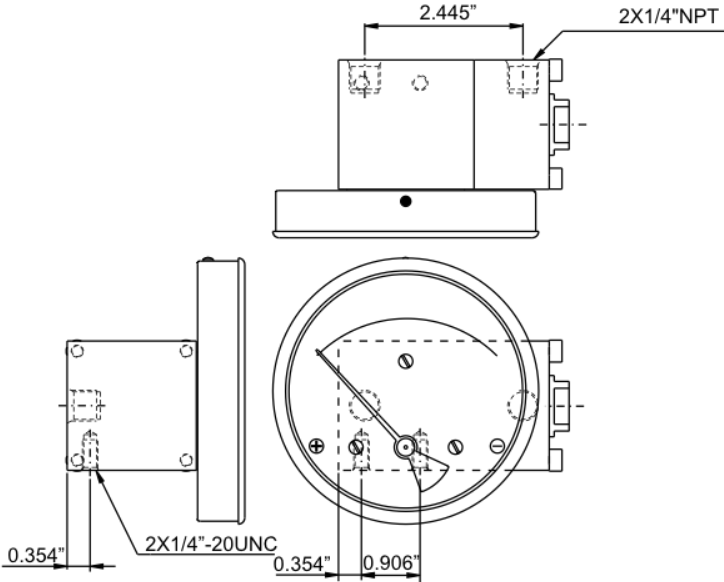
4-1/2" DIAL SIZE



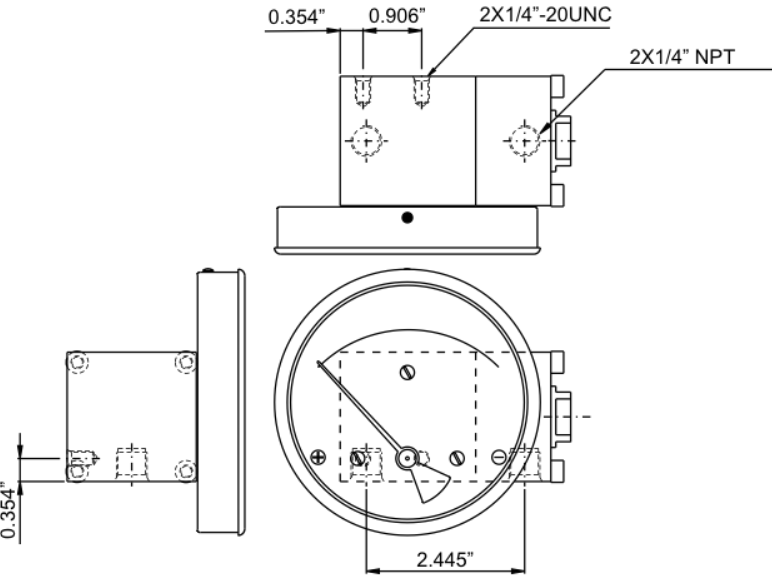
6.0" DIAL SIZE

# PORTING DETAILS, SMALL CONVOLUTED DIAPHRAGM INST.

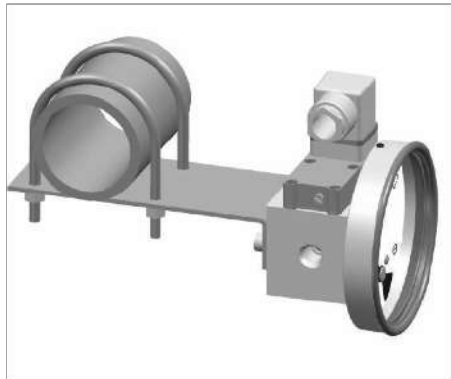
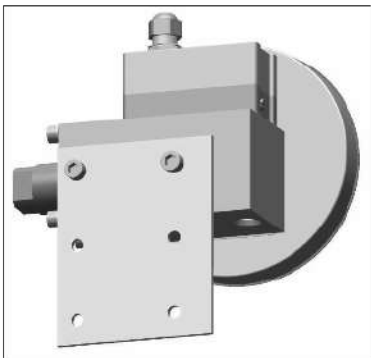
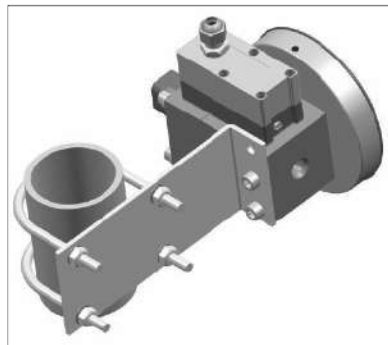
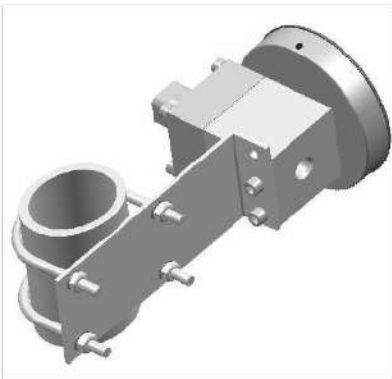
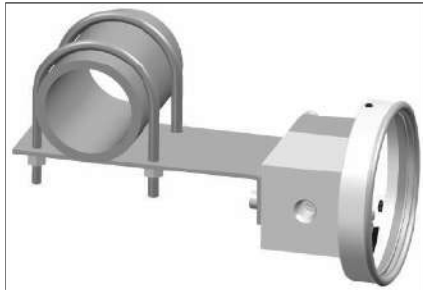
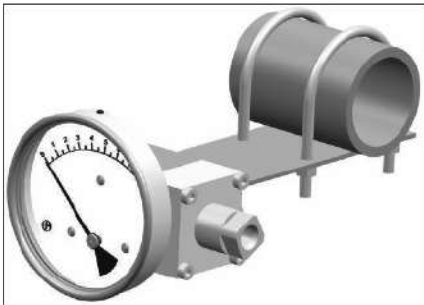
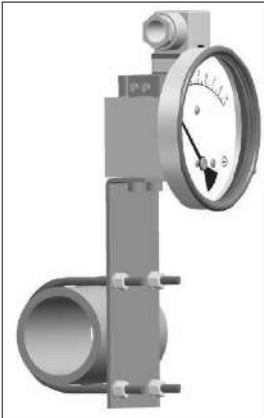
## BACK PORTING



## BOTTOM PORTING



# BRACKET MOUNTING COMBINATIONS, with & without switch







Differential Pressure Plus Inc. has been designing and manufacturing filter indicators and differential pressure gauges for 25 years.



Web: [DifferentialPressure.com](http://DifferentialPressure.com)

Email: [info@dpgaugeusa.com](mailto:info@dpgaugeusa.com)

Phone: 203-481-2545

Address: 67-4 North Branford Road, Branford, CT, 06405